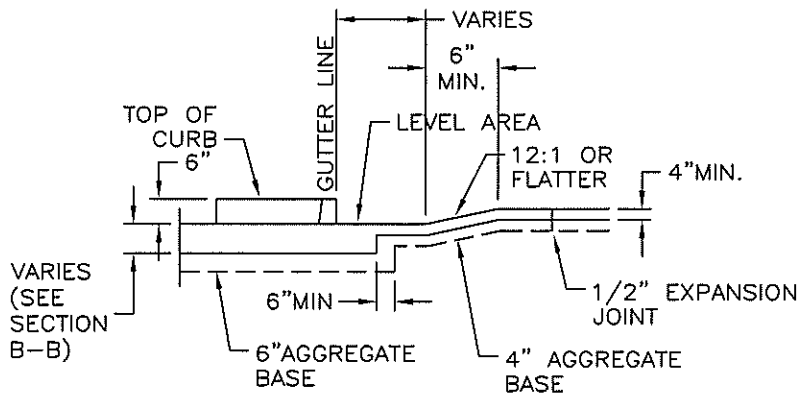
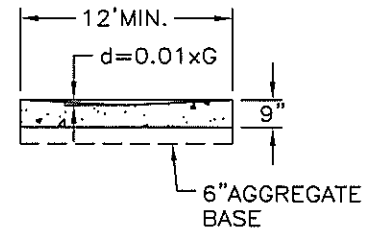


* SEE NOTE 1
 ** FOR OPTIONAL SECTIONAL POUR, SEE NOTE 2



SECTION A-A

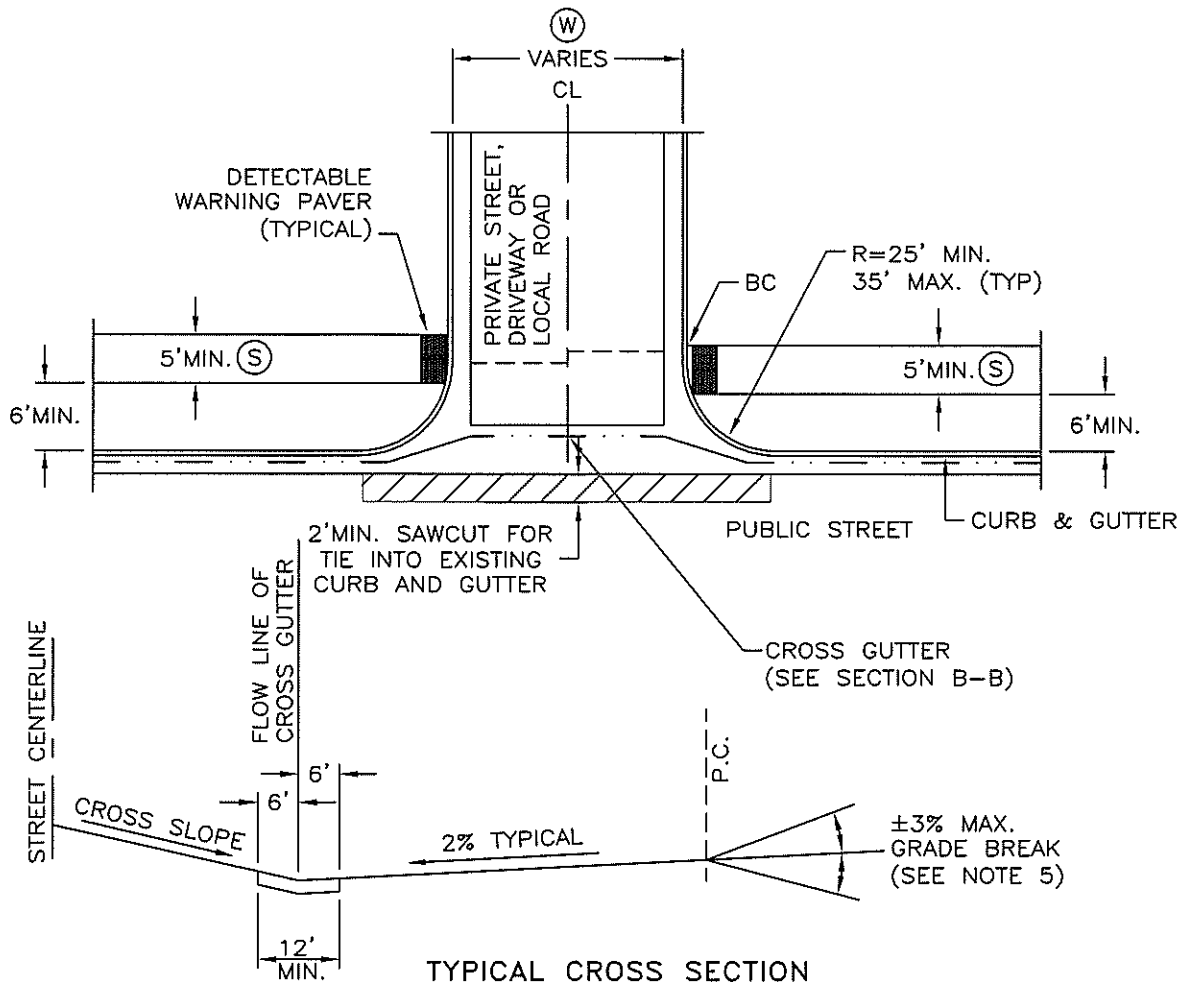


SECTION B-B

(W)
W. 15' MINIMUM FOR ONE-WAY DRIVEWAYS 30' MINIMUM FOR TWO-WAY DRIVEWAYS, 40' MAXIMUM. 32' FOR LOCAL ROADS 34' FOR LIGHT COMMERCIAL DRIVEWAY 54' FOR HEAVY COMMERCIAL/INDUSTRIAL DRIVEWAY

- (S) = SIDEWALK
- (G) = WIDTH OF VALLEY GUTTER (12' MINIMUM)

NO.	REVISION	DATE	STANDARD DETAIL FOR PUBLIC WORKS CONSTRUCTION	SECTION: DOUGLAS COUNTY
			PCC DRIVEWAY APRON (NON-RESIDENTIAL) & LOCAL ROAD VALLEY GUTTER	DATE: JULY 2017
				DWG: A08-C



TYPICAL CROSS SECTION AT CENTERLINE

NOTES:

1. IF NOT COMPLETED WITH MONOLITHIC POUR OR IF REPLACEMENT OF EXISTING PANEL, DOWEL NO.4 BARS AT MID SLAB DEPTH 4" O.C. MINIMUM EMBED IN BOTH SLABS SHALL BE 6".
2. WHEN CONSTRUCTING APRONS WHERE CURB AND GUTTER EXISTS, COMPLETELY REMOVE EXISTING SECTIONS. APRON MAY BE Poured MONOLITHIC TO AC LINE, IN WHICH CASE THE BARS SHALL BE CONTINUOUS. IF OPTIONAL SECTIONAL POUR IS USED, WEAKEND PLANE JOINTS AND REBAR END CLEARANCE SHALL APPLY AS SHOWN.
3. CONCRETE SHALL CONFORM TO THE REQUIREMENTS OF SECTION 337 OF THE STANDARD SPECIFICATIONS FOR PUBLIC WORKS CONSTRUCTION FOR CONCRETE EXPOSED TO FREEZE-THAW ENVIRONMENTS.
4. CURB RAMPS SHALL BE CONSTRUCTED IN CONFORMANCE WITH "CURB RAMP" DETAIL A07-C OR USE NDOT DETAIL R-5.2.1 TYPE A.
5. FOR GRADE CHANGES GREATER THAN 3% VERTICAL CURVES OF AT LEAST 10 FEET MUST BE USED. SPANDREL AND VALLEY GUTTER MUST BE Poured MONOLITHICALLY.
6. DRIVEWAY GEOMETRICS SHALL GO TO THE BC.
7. PORTLAND CEMENT CONCRETE SHALL HAVE THE FOLLOWING CHARACTERISTICS: SYNTHETIC FIBER-REINFORCEMENT (AT A MINIMUM OF 1 POUND PER CUBIC YARD), 4000 PSI MINIMUM COMPRESSIVE STRENGTH AT 28 DAYS, MINIMUM 6 SACKS OF CEMENT PER CUBIC YARDS WITH A MAXIMUM WATER/CEMENT RATIO OF 0.45, AIR ENTRAINMENT 6% ±1.5%, SLUMP AT 1 TO 4 INCHES. ALL MATERIALS SHALL CONFORM TO SECTION 202 OF THE STANDARD SPECIFICATIONS FOR PUBLIC WORKS CONSTRUCTION.
8. THIS DETAIL ALSO APPLIES TO NON-RESIDENTIAL AND MULTI-FAMILY RESIDENTIAL DRIVEWAYS.

NO.	REVISION	DATE	STANDARD DETAIL FOR PUBLIC WORKS CONSTRUCTION	SECTION: DOUGLAS COUNTY
			PCC DRIVEWAY APRON (NON-RESIDENTIAL) & LOCAL ROAD VALLEY GUTTER	DATE: DEC 2018
				DWG: A08-C