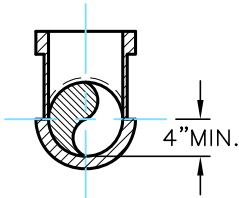


3" OR 6" ADJUSTING GRADE RING, MAX HEIGHT 12", AS REQUIRED TO MEET STREET ELEVATION

FIBER REINFORCED CONCRETE COLLAR FULL DEPTH. SET 1/4" BELOW FINISHED GRADE SEE "TEMPORARY COVER" DETAIL A13 IF NEEDED



**SECTION B-B**  
NTS

60" DIA. MIN. MANHOLE. SEE NOTE 2

MODIFIED POXPO CROSS

CORE DRILL MANHOLE WHEN CONNECTING TO AN EXISTING SEWER MAIN  
WATERTIGHT SEAL, LINK SEAL WITH STAINLESS STEEL BOLTS OR APPROVED EQUAL

SANITARY SEWER 8" MIN.

8" MIN. SDR 35 PIPE. MATCH INCOMING PIPE SIZE.

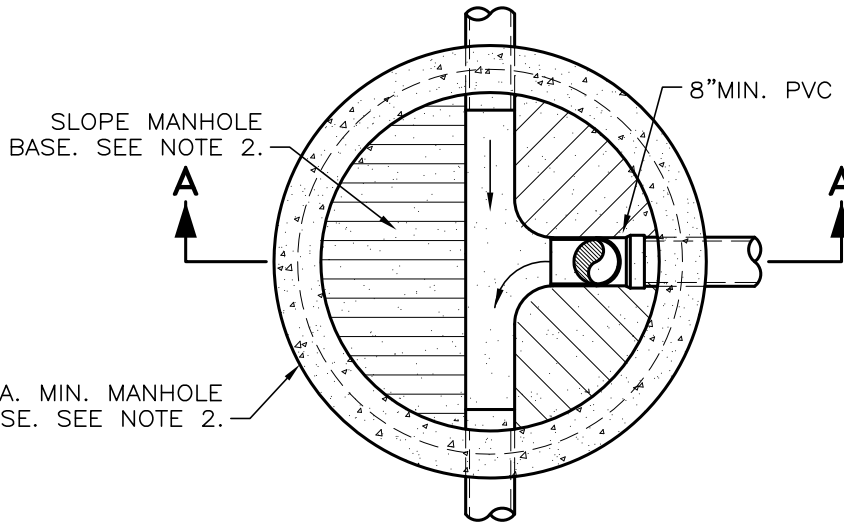
20" MIN. FOR 8" PIPE (SEE NOTE 3)

PIPE STRAP (SEE DETAIL). PLACE AT TOP, BOTTOM, AND 18" O.C. BETWEEN. MINIMUM 2 REQUIRED PER INSTALLATION. ATTACH TO BARREL WITH 1/4"Ø x 3" STAINLESS STEEL ANCHOR BOLTS.

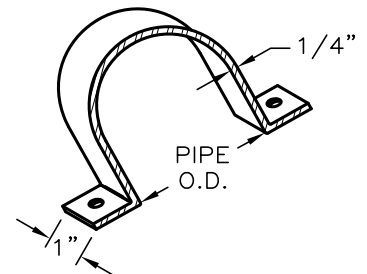
ANTI-FLOAT BASE FOR GROUNDWATER CONDITIONS, OPTIONAL PER DESIGN ENGINEER

**SECTION A-A**  
NTS

MANUFACTURER TO FORM INVERT TROUGH TO ACCEPT PVC ELBOW (AS SIZED PER PLANS)



60" DIA. MIN. MANHOLE AND BASE. SEE NOTE 2.



STRAP MATERIAL SHALL BE STAINLESS STEEL OR HIGH GRADE ALUMINUM

**PIPE STRAP DETAIL**  
NTS

**PLAN VIEW**  
NTS

**NOTES:**

1. USE OF A DROP MANHOLE REQUIRES APPROVAL FROM DOUGLAS COUNTY ENGINEER OR SEWER UTILITY.
2. SEE SANITARY SEWER MANHOLE DETAIL C03 FOR ADDITIONAL NOTES, DIMENSIONS AND DETAILS.
3. PROVIDE ADEQUATE PIPE LENGTH TO ALLOW FOR REMOVAL OF MODIFIED CROSS.
4. DROP MANHOLE FOR USE ONLY IN GRAVITY SEWER SYSTEMS.

NO.			REVISION			DATE			STANDARD DETAIL FOR PUBLIC WORKS CONSTRUCTION			SECTION: <b>DOUGLAS COUNTY</b>		
									<b>DROP MANHOLE</b>			DATE: <b>JULY 2017</b>		
												DWG: <b>C04</b>		