

**BASE DATA**

32005C0205G FIRM MAP NUMBER  
 TBD REVISED FIRM PANNEL NUMBER

**WORK MAP LEGEND**

- NEW REVISED ZONE AE
- NEW REVISED ZONE X UNSHADED
- CROSS SECTIONS
- REACH ALIGNMENT
- FLOODPLAIN BOUNDARY - 100yr
- EFFECTIVE FLOODPLAIN BOUNDARY - 100YR
- TIE-IN TO EFFECTIVE FLOODPLAIN - 100YR
- PROPOSED WSE CONTOUR
- 6236 EXISTING GROUND CONTOUR
- PARCEL BOUNDARY

**TOPOGRAPHIC DATA SOURCE:**

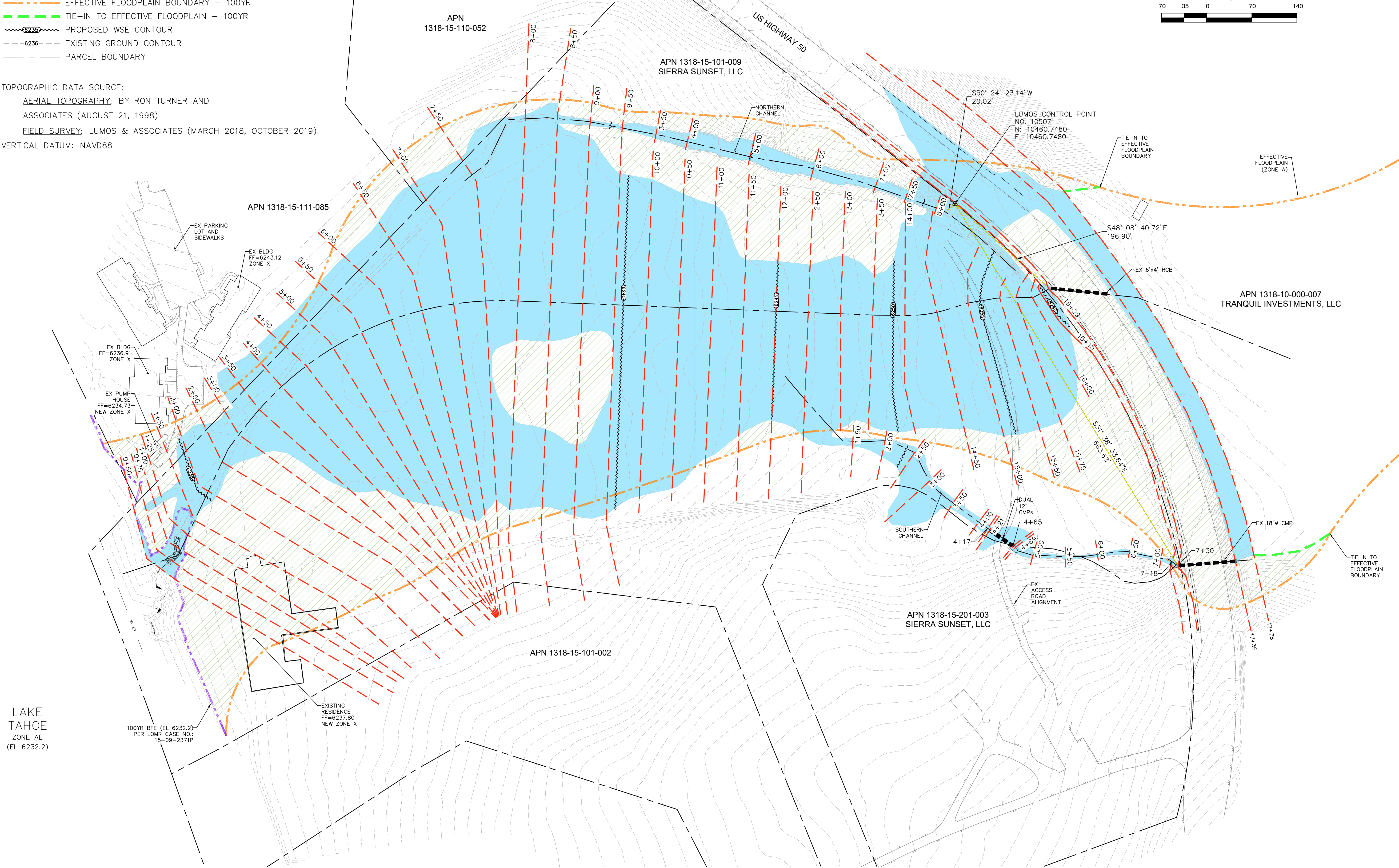
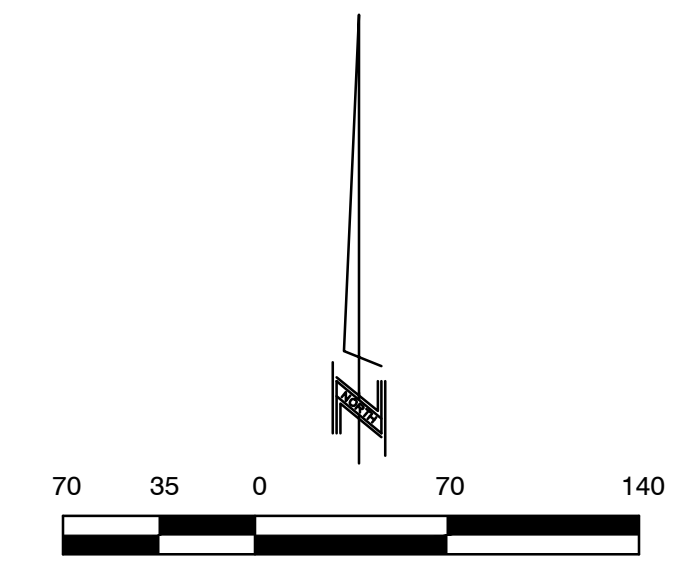
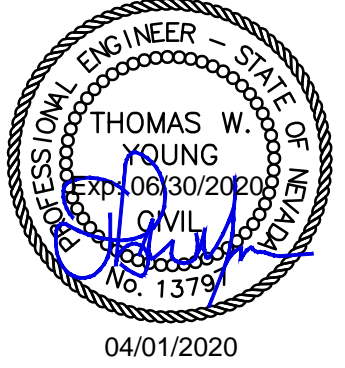
AERIAL TOPOGRAPHY: BY RON TURNER AND ASSOCIATES (AUGUST 21, 1998)  
 FIELD SURVEY: LUMOS & ASSOCIATES (MARCH 2018, OCTOBER 2019)  
 VERTICAL DATUM: NAVD88



9222 PROTOTYPE DRIVE  
 RENO, NEVADA 89521  
 TEL (775) 827-6111  
 FAX (775) 827-6122

WWW.LUMOSINC.COM

CIVIL ENGINEERING  
 STRUCTURAL ENGINEERING  
 ARCHITECTURE SURVEYING / GIS  
 CONSTRUCTION SERVICES  
 MATERIALS TESTING



SIERRA SUNSET, LLC  
 MCFAUL CREEK  
 LETTER OF MAP REVISION (LOMR)  
 TOPOGRAPHIC WORK MAP

REV	DATE	DESCRIPTION

**HYD-1**  
 DATE: APR 2020  
 DRAWN BY: KMK  
 DESIGNED BY: KMK  
 CHECKED BY: TWY  
 JOB NO.: 6074.005

L:\Projects\6074\LOMR\LOMR\_Submittal - January 2018\LOMR\6074\005-CMR.dwg, WORK MAP, 04/01/2020 12:19 pm, 6074.dwg